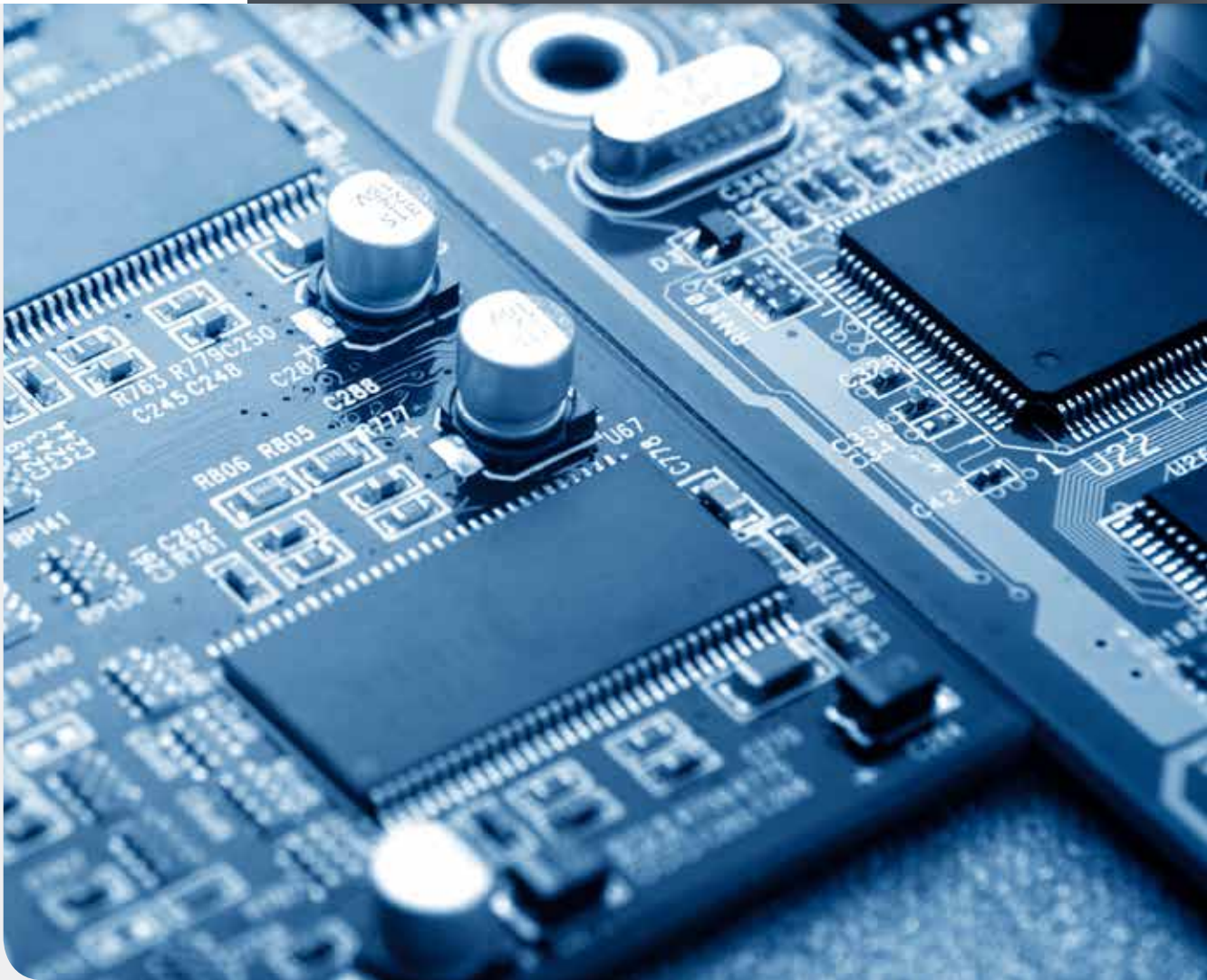
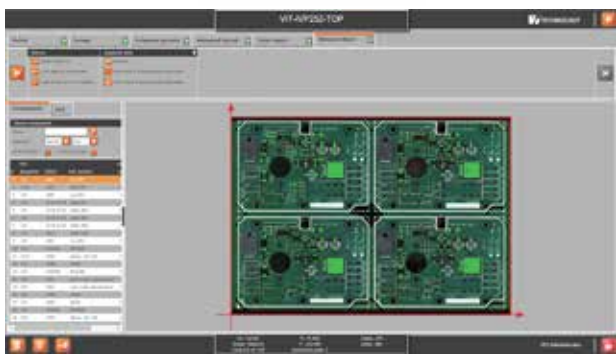


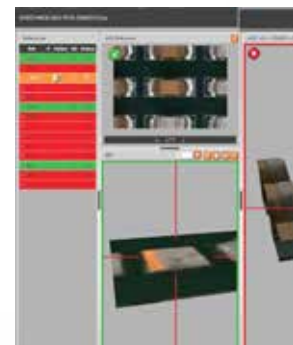


Leverage your data
Drive your Process
... to industry 4.0





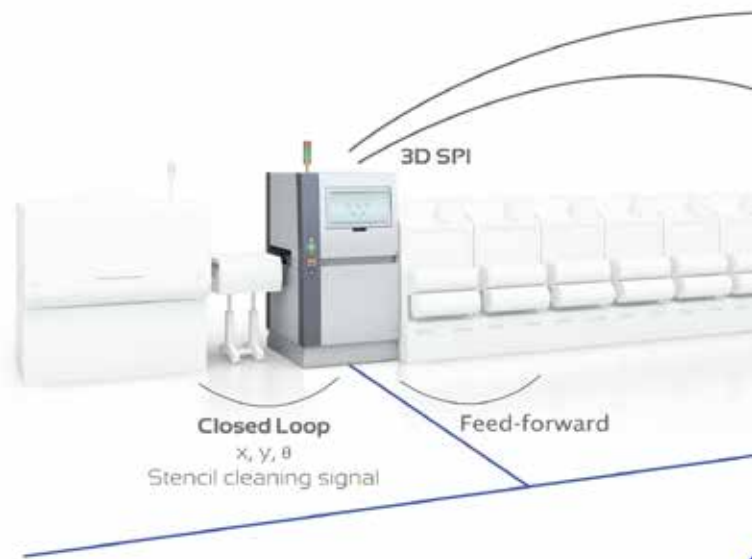
import your data



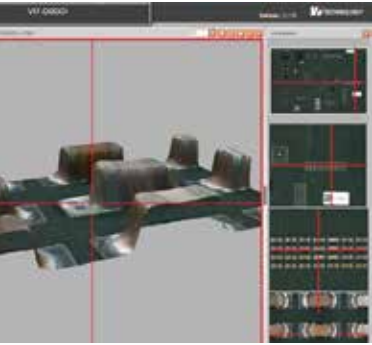
optimize your line



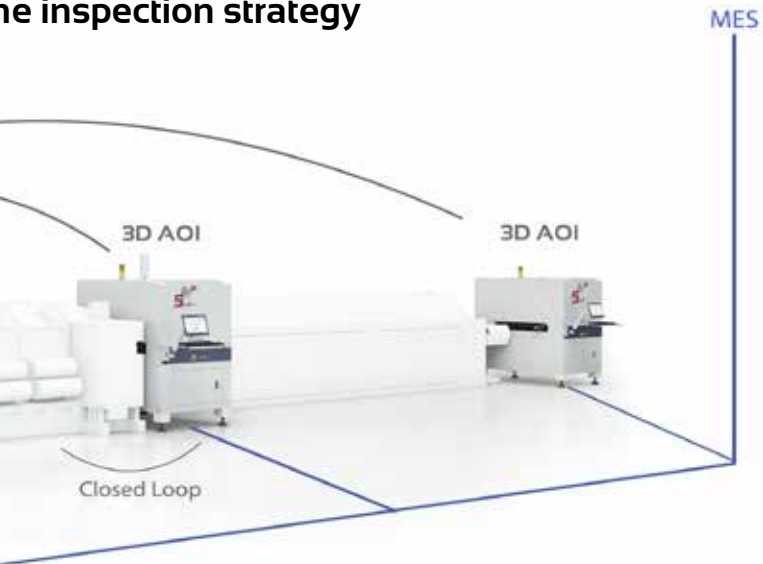
view your process in real-time



analyze your



the inspection strategy



review your process in 3D



process at a glance

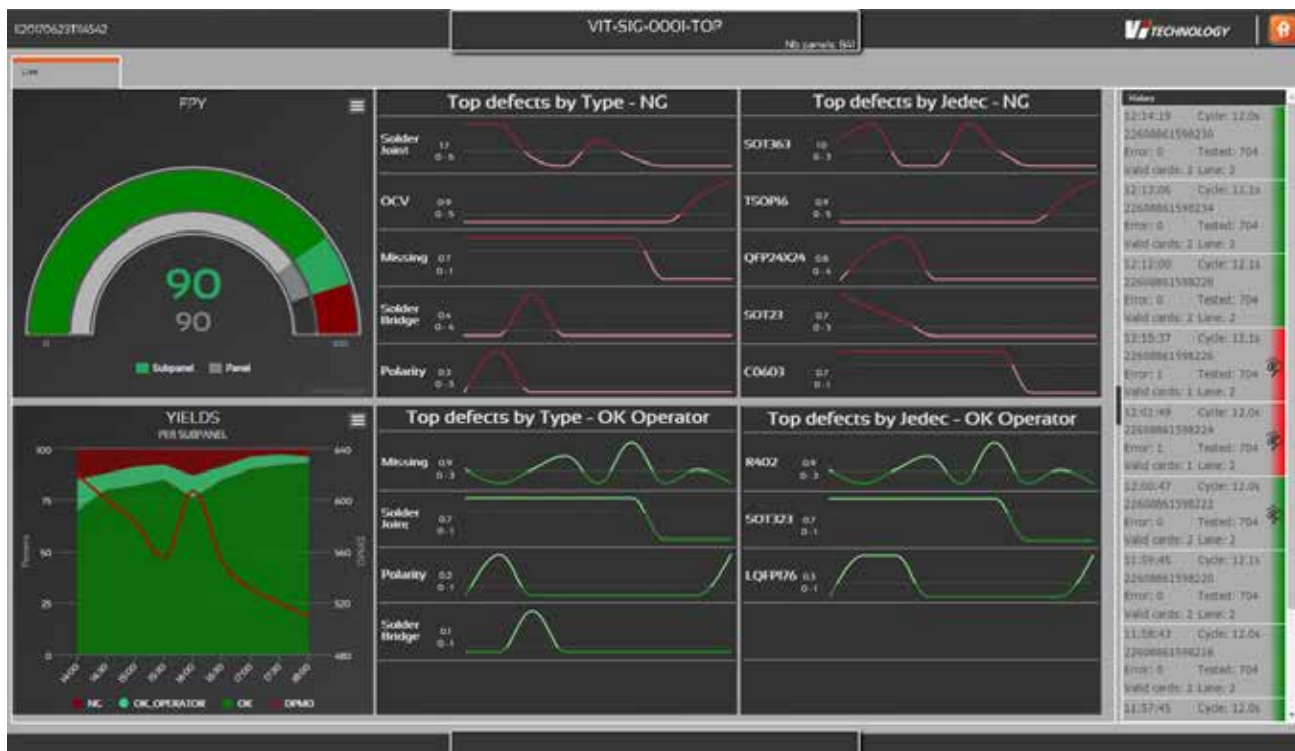


View your process in real time

Eye catching and intuitive process status to drive quick **corrective action** in real time.

Key process indicators at SPI (s-401) or AOI (s-402) can be viewed anywhere in the plant (web-based) or on any mobile device

- DPMO trends
- FPY
- Top defect trend lines
- Scatter charts, ...



"FPY is improving but two issues are revealed by trend charts : bad component reference loaded in placement machine (OCV) and unstable polarity check on LQFP176 component"



Analyze your process at a glance

Go straight to the point to identify **recurrent process detractors**

- Drill down in tera bytes of SPI (s-403) or AOI (s-404) data and images to analyze **root cause**
- Monitor **process capabilities**
- Generate regular **quality reports** (daily, weekly, monthly, ...) to support 8D problem solving and lean initiatives.



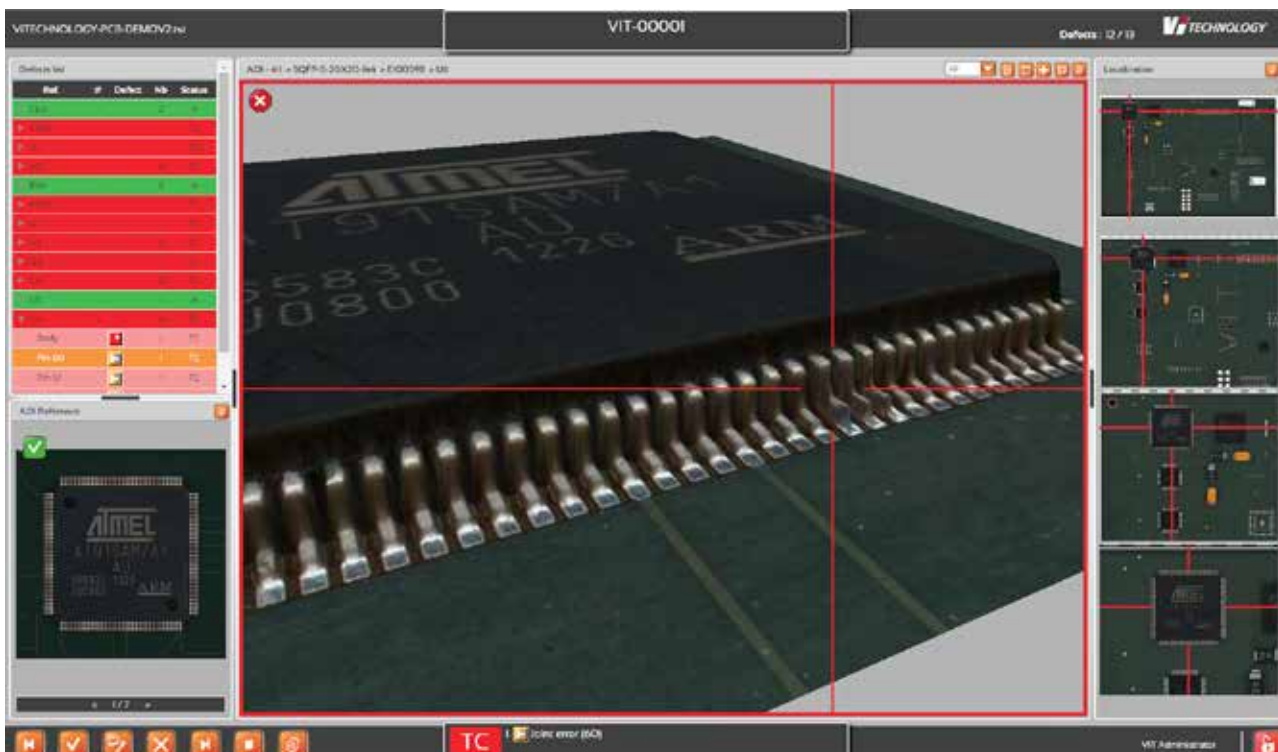
"Print process quality has improved over the period but excessive warnings show we are operating close to process limits"



Review your process in 3D

Review high quality 3D defect images to focus on what matters

- Localize defects at a glance
- Classify easily using reference image
- Use IPC or user-defined defect categories
- Benefit from pre-defined corrective action messages
- Optimize review environment using customized screen layout



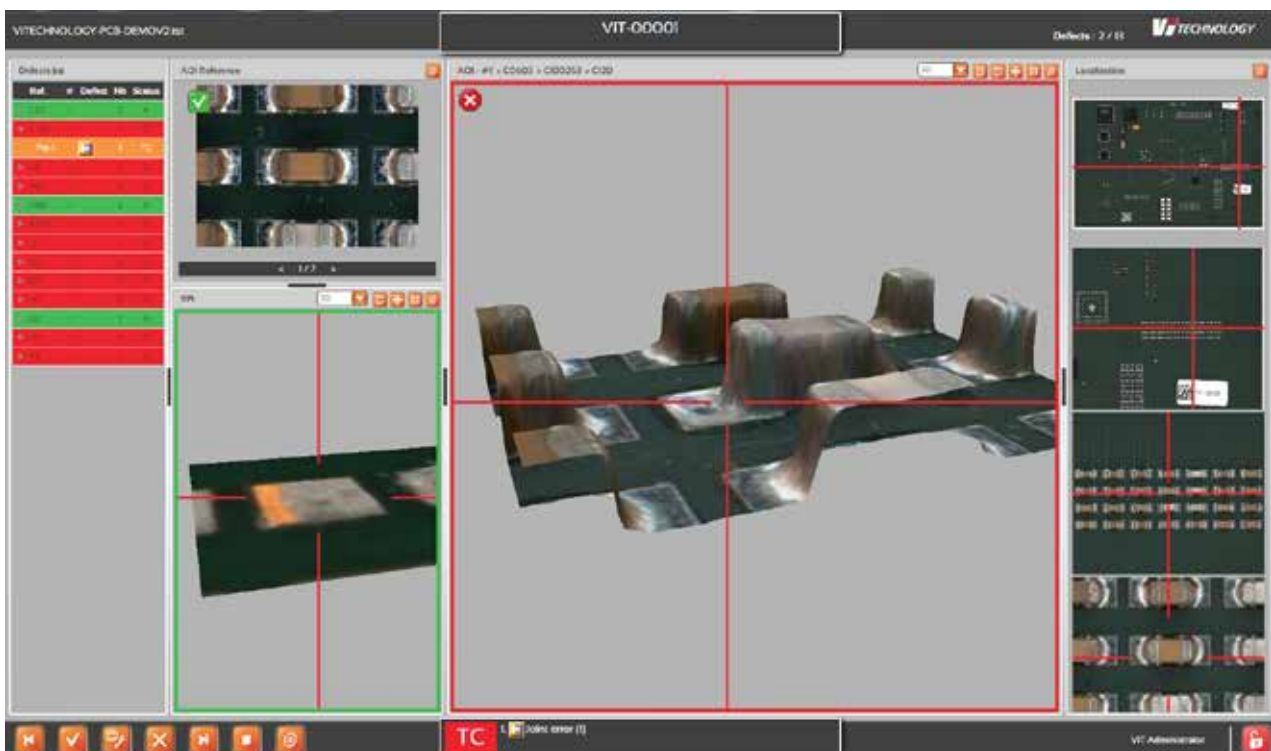
"Lifted lead is easily identified"



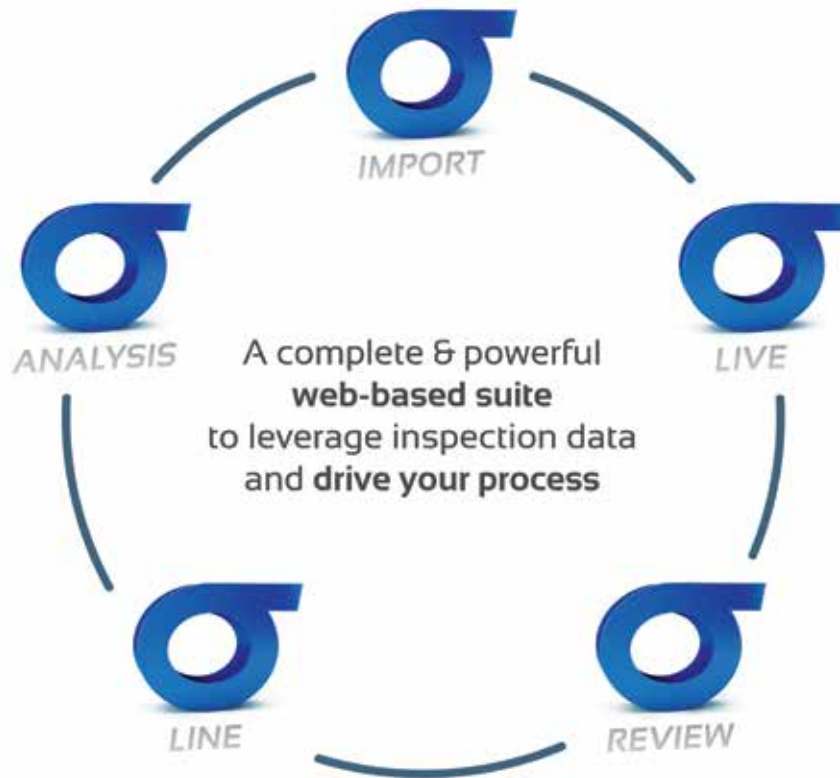
Optimize your line inspection strategy

Correlate SPI and AOI defects (s-500) to **minimize operator review** and **expand defect coverage**

- Adjust SPI and AOI program tolerances based on facts (data and images)
- Eliminate operator false sanctions
- Enable intelligent sampling at X-ray station
- Build process knowledge by tracing defect evolution in the line



"Lack of solder detected at AOI, not at SPI; we need to tighten tolerances at SPI to detect it as an error"



Specifications

PC configuration	Core i5 minimum, 8 Gb RAM, ethernet 100Mbps/s Graphics card (1 Gb min., 2 Gb for optimal performance)
Operating system	Windows 7 or later
Data base	SQL server recommended
Screen configuration	22" wide screen with 1680x1050 resolution

HEADQUARTERS
France
Tel: +33 4 76 75 85 65

EUROPE, MIDDLE-EAST & AFRICA
sales.europe@vitechnology.com
Germany
Tel: +49 (0) 17 3206 0510

CHINA
sales.asia@vitechnology.com
Shenzhen
Tel: +86 755 8212 4147

ASEAN & OCEANIA
sales.asia@vitechnology.com
Singapore
Tel: +65 6747 6550

AMERICAS
sales.americas@vitechnology.com
United States
Tel: +1 (972) 235 1170

